



Life's better outside.®

Commissioners

Jeffery D. Hildebrand  
Chairman  
Houston

Oliver J. Bell  
Vice-Chairman  
Cleveland

James E. Abell  
Kilgore

Wm. Leslie Doggett  
Houston

Paul L. Foster  
El Paso

Anna B. Galo  
Laredo

Robert L. "Bobby" Patton, Jr.  
Fort Worth

Travis B. "Blake" Rowling  
Dallas

Dick Scott  
Wimberley

Lee M. Bass  
Chairman-Emeritus  
Fort Worth

T. Dan Friedkin  
Chairman-Emeritus  
Houston

David Yoskowitz, Ph.D.  
Executive Director

9/5/2024

The Honorable Shane Long  
County Judge  
Palo Pinto County  
P.O. Box 190  
Palo Pinto, TX 76484

Dear Judge Long,

As part of the Texas Parks and Wildlife Department's efforts to ensure good communications with our constituents and neighbors, and in compliance with §11.353 Parks and Wildlife Code, I want to inform you of the Department's intent to conduct one or more prescribed burns at Palo Pinto Mountains State Park sometime between October 2024 and April 2025.

Our primary target timeframe for these burns is sometime between October 2024 and December 2024. Burn opportunities are dependent on weather, vegetation conditions, current and expected fire danger, and many other considerations. If we are unable to conduct these burns within this target timeframe we will contact you again with the next potential timeframe.

A site-specific fire management plan for prescribed burning operations at Palo Pinto Mountains State Park is in place and we will be happy to share a copy with your office if you desire. In addition, neighboring landowners have been notified of the Department's intentions with the attached letter and map. In order to reach the community at large, a public notice will be published in the Palo Pinto Press and the Breckenridge American prior to this burn period.

Additional community outreach on the upcoming burn may include information posted on the Department's website and social media outlets.

Advance notifications have also been made to other state and local officials, nearby water utility officials, and owners of any utility infrastructure within the prescribed burn area. Prior to ignition of any fires, city or county emergency services dispatch center, local area fire departments, and the Texas Commission on Environmental Quality will be notified to ensure they are aware of these actions.

Please contact James Adams at (254) 672-5684 or [James.Adams@tpwd.texas.gov](mailto:James.Adams@tpwd.texas.gov) if you have any questions regarding the planned burn or notifications.

Sincerely,

James Adams  
Park Superintendent  
Palo Pinto Mountains State Park  
1915 FM 2372  
Strawn, TX 76475  
(254) 672-5684

RECEIVED

SEP 13 2024

Palo Pinto  
County Judge

Attachment: Landowner Notification Letter  
Landowner Notification Map



Life's better outside.®

Commissioners

Jeffery D. Hildebrand  
Chairman  
Houston

Oliver J. Bell  
Vice-Chairman  
Cleveland

James E. Abell  
Kilgore

Wm. Leslie Doggett  
Houston

Paul L. Foster  
El Paso

Anna B. Galo  
Laredo

Robert L. "Bobby" Patton, Jr.  
Fort Worth

Travis B. "Blake" Rowling  
Dallas

Dick Scott  
Wimberley

Lee M. Bass  
Chairman-Emeritus  
Fort Worth

T. Dan Friedkin  
Chairman-Emeritus  
Houston

---

David Yoskowitz, Ph.D.  
Executive Director

September 5, 2024

Dear Palo Pinto Mountains State Park Neighbor:

The Texas Parks and Wildlife Department is planning to conduct prescribed burns in Palo Pinto Mountains State Park at 1915 FM 2372, Strawn, TX sometime between October 2024 and April 2025.

Our primary target timeframe for these burns is sometime between October 2024 and December 2024. Burn opportunities are dependent on weather, vegetation conditions, current and expected fire danger, and many other considerations. If we are unable to conduct these burns within this target timeframe we will contact you again with the next potential timeframe.

During the burn, you may see smoke in your neighborhood or on nearby roads. We caution you to reduce your speed and use your low-beam headlights when smoke is present. Other recommended precautions prior to the burn include relocating hay, woodpiles, pets, livestock, and equipment away from park boundary fences and providing defensible space around structures adjacent to park property.

Prescribed burns are a management tool used to restore forest and prairie habitats that were periodically burned by natural fires. Prescribed burns also reduce the potential damage a wildfire could cause by reducing available fuels such as dead trees, leaf litter, and other flammable vegetation on the landscape. Prescribed fires on state parks are conducted by Texas Parks and Wildlife Department personnel who have undergone extensive fire training and meet national wildland firefighting and incident management standards. Additionally, the state park staff will work with local fire and emergency management officials to plan and conduct the prescribed fire.

Each prescribed fire plan defines the local weather and other conditions under which a prescribed burn may be conducted, the personnel and equipment required, and fire-break locations. Most importantly, the fire plan prioritizes public and firefighter safety. The plan reduces the risk of fire escaping onto adjacent properties and minimizes the effect of smoke in nearby residential and smoke sensitive areas. The plan also establishes contingency measures to protect adjacent properties if the fire were to escape established boundaries. The prescribed burns are ignited by hand in predetermined patterns that ensure the best measures for containment.

Texas has a history of naturally occurring wildfires, making prescribed burns very important to maintaining habitats on state parks. Private landowners should consider implementing wildfire mitigation efforts on their lands as well in order to preserve their property and way of life before a wildfire event starts. Information on how to be prepared can be found at: [www.nfpa.org/education-and-research/wildfire/firewise-usa](http://www.nfpa.org/education-and-research/wildfire/firewise-usa).

Please contact James Adams at 254-672-5684 or email at [James.Adams@tpwd.texas.gov](mailto:James.Adams@tpwd.texas.gov) if you have any questions regarding the planned burn or notifications. Thank you for your support and understanding of this valuable and necessary habitat management and fuel reduction tool.

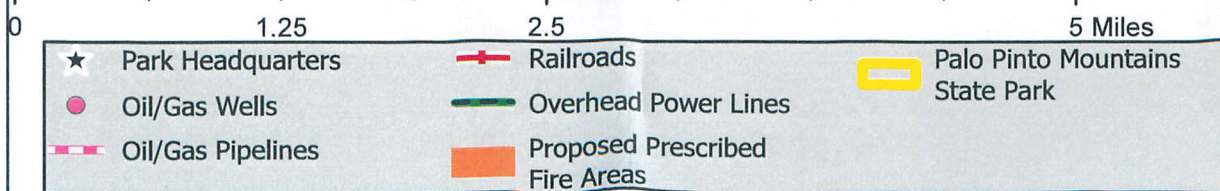
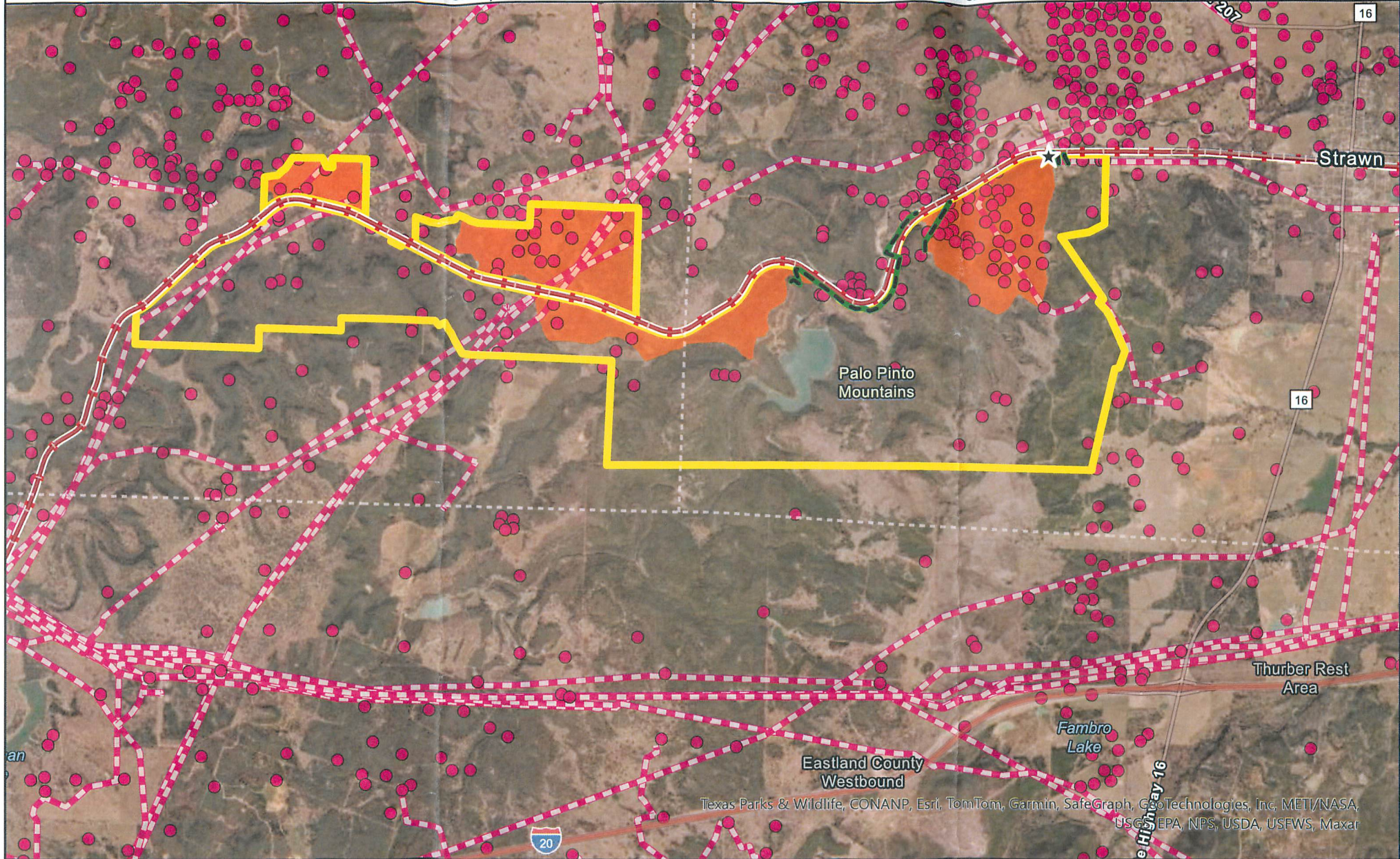
Sincerely,

James Adams  
Park Superintendent  
Palo Pinto Mountains State Park  
1915 FM 2372, Strawn, TX 76475  
254-672-5684

Attachment: Prescribed Fire Treatment Area Map



# Palo Pinto Mountains State Park, Palo Pinto County: Prescribed Fire Notice - Fall 2024 - Spring 2025



Map ID: Palo Pinto Mountains State Park\_  
RX-Public Notice - FY2025  
Imagery ArcGIS Online - World Imagery  
Maps are for planning purposes only.  
No claims to accuracy are made or implied.  
Pipeline and well data from  
the Texas Railroad Commission.





